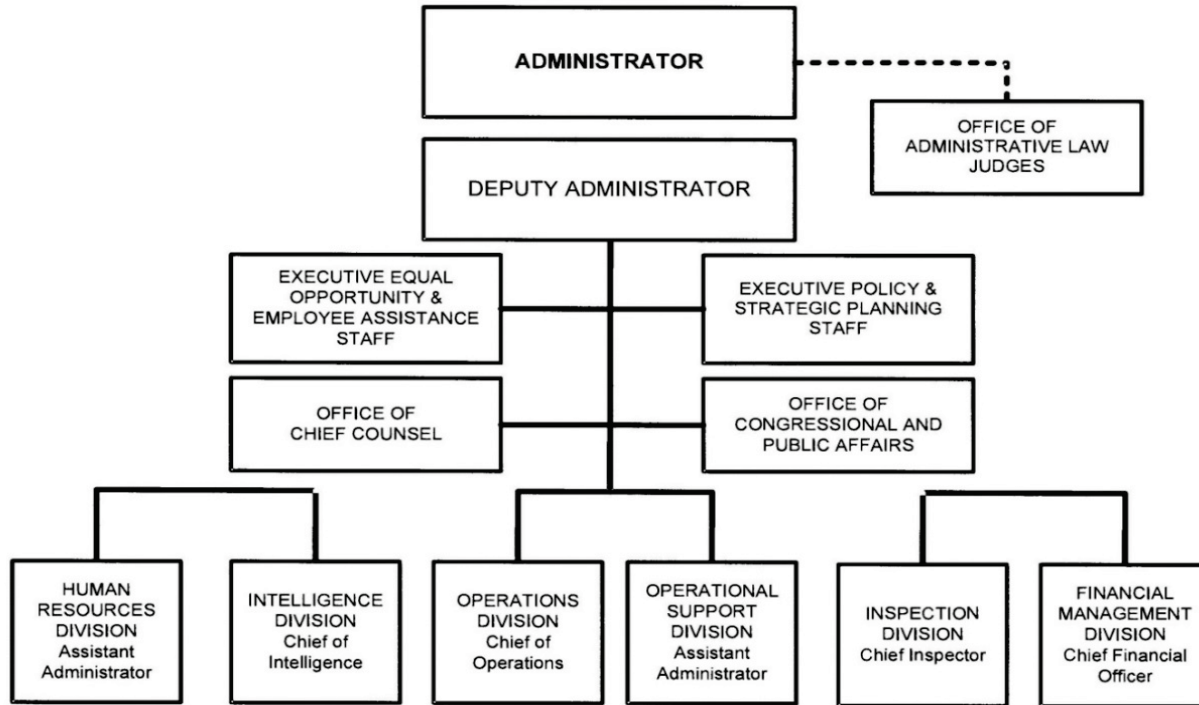



A: Organizational Chart

DRUG ENFORCEMENT ADMINISTRATION



Approved by:  Date: 5/16/13
ERIC H. HOLDER, JR.
Attorney General

B. Summary of Requirements

Summary of Requirements
Drug Enforcement Administration
Salaries and Expenses
(Dollars in Thousands)

| | FY 2017 Request | | |
|---|-----------------|--------------|------------------|
| | Direct Pos. | Estimate FTE | Amount |
| 2015 Enacted 1/ | 8,197 | 6,587 | 2,033,320 |
| Total 2015 Enacted | 8,197 | 6,587 | 2,033,320 |
| 2016 Enacted | 8,302 | 6,587 | 2,080,000 |
| Base Adjustments | | | |
| Pay and Benefits | 0 | 0 | 9,801 |
| Domestic Rent and Facilities | 0 | 0 | 1,046 |
| Other Adjustments | 0 | 0 | 141 |
| Foreign Expenses | 0 | 0 | 4,116 |
| Total Base Adjustments | 0 | 0 | 15,104 |
| Total Technical and Base Adjustments | 0 | 0 | 15,104 |
| 2017 Current Services | 8,302 | 6,587 | 2,095,104 |
| Program Changes | | | |
| Increases: | | | |
| Cyber Security and Insider threat | 11 | 6 | 7,561 |
| Heroin Enforcement | 42 | 21 | 12,483 |
| Subtotal, Increases | 53 | 27 | 20,044 |
| Offsets: | | | |
| Program and/or Administrative Savings | 0 | 0 | -12,172 |
| Subtotal, Offsets | 0 | 0 | -12,172 |
| Total Program Changes | 53 | 27 | 7,872 |
| 2017 Total Request | 8,355 | 6,614 | 2,102,976 |
| 2017 Balance Rescission (if applicable) | 0 | 0 | -6,192 |
| 2017 Total Request (with Balance Rescission) | 8,355 | 6,614 | 2,096,784 |
| 2016 - 2017 Total Change | 53 | 27 | 16,784 |

^{1/} FY 2015 FTE is actual

Summary of Requirements
Drug Enforcement Administration
 Salaries and Expenses
 (Dollars in Thousands)

| Program Activity | FY 2015 Appropriation Enacted | | | FY 2016 Enacted | | | FY 2017 Technical and Base Adjustments | | | FY 2017 Current Services | | |
|-------------------------------------|-------------------------------|--------------|------------------|-----------------|--------------|------------------|--|----------|---------------|--------------------------|--------------|------------------|
| | Direct Pos. | Actual FTE | Amount | Direct Pos. | Est. FTE | Amount | Direct Pos. | Est. FTE | Amount | Direct Pos. | Est. FTE | Amount |
| International Enforcement | 1,074 | 934 | 442,640 | 1,074 | 934 | 466,364 | 0 | 0 | 6,027 | 1,074 | 934 | 472,391 |
| Domestic Enforcement | 7,097 | 5,631 | 1,586,735 | 7,202 | 5,631 | 1,610,179 | 0 | 0 | 9,047 | 7,202 | 5,631 | 1,619,226 |
| State and Local Assistance | 26 | 22 | 3,945 | 26 | 22 | 3,457 | 0 | 0 | 30 | 26 | 22 | 3,487 |
| Total Direct | 8,197 | 6,587 | 2,033,320 | 8,302 | 6,587 | 2,080,000 | 0 | 0 | 15,104 | 8,302 | 6,587 | 2,095,104 |
| Balance Rescission | | | 0 | | | 0 | | | 0 | | | 0 |
| Total Direct with Rescission | | | 2,033,320 | | | 2,080,000 | | | 15,104 | | | 2,095,104 |
| Reimbursable FTE | | 1,119 | | | 1,124 | | | 0 | | | 1,127 | |
| Total Direct and Reimb. FTE | | 7,706 | | | 7,711 | | | 0 | | | 7,714 | |
| Other FTE: | | | | | | | | | | | | |
| LEAP | | 854 | | | 854 | | | 0 | | | 854 | |
| Overtime | | 48 | | | 48 | | | 0 | | | 48 | |
| Grand Total, FTE | | 8,608 | | | 8,613 | | | 0 | | | 8,616 | |

| Program Activity | 2017 Increases | | | 2017 Offsets | | | 2017 Request | | |
|-------------------------------------|----------------|-----------|---------------|--------------|----------|----------------|--------------|--------------|------------------|
| | Direct Pos. | Est. FTE | Amount | Direct Pos. | Est. FTE | Amount | Direct Pos. | Est. FTE | Amount |
| International Enforcement | 0 | 0 | 0 | 0 | 0 | -4,520 | 1,074 | 934 | 467,871 |
| Domestic Enforcement | 53 | 27 | 20,044 | 0 | 0 | -7,647 | 7,255 | 5,658 | 1,631,623 |
| State and Local Assistance | 0 | 0 | 0 | 0 | 0 | -5 | 26 | 22 | 3,482 |
| Total Direct | 53 | 27 | 20,044 | 0 | 0 | -12,172 | 8,355 | 6,614 | 2,102,976 |
| Balance Rescission | | | 0 | | | -6,192 | | | -6,192 |
| Total Direct with Rescission | | | 20,044 | | | -18,364 | | | 2,096,784 |
| Reimbursable FTE | | 0 | | | 0 | | | 1,127 | |
| Total Direct and Reimb. FTE | | 27 | | | 0 | | | 7,741 | |
| Other FTE: | | | | | | | | | |
| LEAP | | 5 | | | 0 | | | 859 | |
| Overtime | | 0 | | | 0 | | | 48 | |
| Grand Total, FTE | | 32 | | | 0 | | | 8,648 | |

FY 2017 Program Increases/Offsets by Decision Unit

Drug Enforcement Administration

Salaries and Expenses

(Dollars in Thousands)

| Program Increases | Location of Description by Program Activity | International Enforcement | | | | Domestic Enforcement | | | | State and Local Assistance | | | |
|-----------------------------------|---|---------------------------|------------|----------|----------|----------------------|------------|-----------|---------------|----------------------------|------------|----------|----------|
| | | Direct Pos. | Agt./Atty. | Est. FTE | Amount | Direct Pos. | Agt./Atty. | Est. FTE | Amount | Direct Pos. | Agt./Atty. | Est. FTE | Amount |
| Cyber Security and Insider threat | | 0 | 0 | 0 | 0 | 11 | 3 | 6 | 7,561 | 0 | 0 | 0 | 0 |
| Heroin Enforcement | | 0 | 0 | 0 | 0 | 42 | 32 | 21 | 12,483 | 0 | 0 | 0 | 0 |
| Total Program Increases | | 0 | 0 | 0 | 0 | 53 | 35 | 27 | 20,044 | 0 | 0 | 0 | 0 |

| Program Increases | Location of Description by Program Activity | Total Increases | | | |
|-----------------------------------|---|-----------------|------------|-----------|---------------|
| | | Direct Pos. | Agt./Atty. | Est. FTE | Amount |
| Cyber Security and Insider threat | | 11 | 3 | 6 | 7,561 |
| Heroin Enforcement | | 42 | 32 | 21 | 12,483 |
| Total Program Increases | | 53 | 35 | 27 | 20,044 |

| Program Offsets | Location of Description by Program Activity | International Enforcement | | | | Domestic Enforcement | | | | State and Local Assistance | | | |
|---------------------------------------|---|---------------------------|------------|----------|---------------|----------------------|------------|----------|---------------|----------------------------|------------|----------|-----------|
| | | Direct Pos. | Agt./Atty. | Est. FTE | Amount | Direct Pos. | Agt./Atty. | Est. FTE | Amount | Direct Pos. | Agt./Atty. | Est. FTE | Amount |
| Program and/or Administrative Savings | | 0 | 0 | 0 | -4,520 | 0 | 0 | 0 | -7,647 | 0 | 0 | 0 | -5 |
| Total Program Offsets | | 0 | 0 | 0 | -4,520 | 0 | 0 | 0 | -7,647 | 0 | 0 | 0 | -5 |

| Program Offsets | Location of Description by Program Activity | Total Offsets | | | |
|---------------------------------------|---|---------------|------------|----------|----------------|
| | | Direct Pos. | Agt./Atty. | Est. FTE | Amount |
| Program and/or Administrative Savings | | 0 | 0 | 0 | -12,172 |
| Total Program Offsets | | 0 | 0 | 0 | -12,172 |

Resources by Department of Justice Strategic Goal and Objective
 Drug Enforcement Administration
 Salaries and Expenses
 (Dollars in Thousands)

| Strategic Goal and Strategic Objective | FY 2015 Appropriation Enacted | | FY 2016 Enacted | | FY 2017 Current Services | | FY 2017 Increases | | FY 2017 Offsets | | FY 2017 Total Request | |
|---|-------------------------------------|------------------|--------------------------|------------------|-----------------------------|------------------|--------------------------|------------------|--------------------------|------------------|--------------------------|------------------|
| | Direct & Reimb FTE | Direct Amount | Direct & Reimb FTE | Direct Amount | Direct & Reimb FTE | Direct Amount | Direct & Reimb FTE | Direct Amount | Direct & Reimb FTE | Direct Amount | Direct & Reimb FTE | Direct Amount |
| Goal 1 Prevent Terrorism and Promote the Nation's Security Consistent with the Rule of Law | | | | | | | | | | | | |
| 1.1 Prevent, disrupt, and defeat terrorist operations before they occur by integrating intelligence and law enforcement efforts to achieve a coordinated response to terrorist threats. | 261 | 87,653 | 208 | 80,045 | 208 | 81,003 | 0 | 1,500 | 0 | -475 | 208 | 82,028 |
| Subtotal, Goal 1 | 261 | 87,653 | 208 | 80,045 | 208 | 81,003 | 0 | 1,500 | 0 | -475 | 208 | 82,028 |
| Goal 2 Prevent crime, protect the rights of the American people, and enforce federal law | | | | | | | | | | | | |
| 2.3 Disrupt and dismantle major drug trafficking organizations to combat the threat, trafficking, and use of illegal drugs and the diversion of licit drugs. | 7,445 | 1,945,667 | 7,503 | 1,999,955 | 7,503 | 2,014,101 | 30 | 18,544 | 0 | -11,697 | 7,533 | 2,020,948 |
| Subtotal, Goal 2 | 7,445 | 1,945,667 | 7,503 | 1,999,955 | 7,503 | 2,014,101 | 30 | 18,544 | 0 | -11,697 | 7,533 | 2,020,948 |
| TOTAL | 7,706 | 2,033,320 | 7,711 | 2,080,000 | 7,711 | 2,095,104 | 30 | 20,044 | 0 | -12,172 | 7,741 | 2,102,976 |

Justifications for Technical and Base Adjustments

Drug Enforcement Administration

Salaries and Expenses

(Dollars in Thousands)

| | Direct Pos. | Estimate FTE | Amount |
|---|----------------|-----------------|--------------|
| Pay and Benefits | | | |
| <p>1 <u>2017 Pay Raise - 1.6%</u> This request provides for a proposed 1.6 percent pay raise to be effective in January of 2017. The amount requested, \$11,357,000, represents the pay amounts for 3/4 of the fiscal year plus appropriate benefits (7,200,000 for pay and \$4,157,000 for benefits.)</p> | 0 | 0 | 11,357 |
| <p>2 <u>Annualization of 2016 Pay Raise</u> This pay annualization represents first quarter amounts (October through December) of the 2016 pay increase of 1.3 percent included in the 2016 President's Budget. The amount requested, \$3,241,000, represents the pay amounts for 1/4 of the fiscal year plus appropriate benefits (\$2,055,000 for pay and \$1,186,00 for benefits).</p> | 0 | 0 | 3,241 |
| <p>3 <u>Changes in Compensable Days</u> The decreased cost for two fewer compensable days in FY 2017 compared to FY 2016 is calculated by dividing the FY 2016 estimated personnel compensation, \$689,388,000 and applicable benefits, \$297,987,000, by 262 compensable days, and multiplying by 2, or -\$7,537,000.</p> | 0 | 0 | -7,537 |
| <p>4 <u>Employees Compensation Fund</u> The -\$710,000 request reflects anticipated changes in payments to the Department of Labor for injury benefits under the Federal Employee Compensation Act.</p> | 0 | 0 | -710 |
| <p>5 <u>Health Insurance</u> Effective January 2017, the component's contribution to Federal employees' health insurance increases by 3.9 percent. Applied against the 2016 estimate of \$70,589,000, the additional amount required is \$2,767,000.</p> | 0 | 0 | 2,767 |
| <p>6 <u>Retirement</u> Agency retirement contributions increase as employees under CSRS retire and are replaced by FERS employees. Based on U.S. Department of Justice Agency estimates, we project that the DOJ workforce will convert from CSRS to FERS at a rate of 0.8 percent per year, for both LEO and Non-LEO, based on the past 5 years of DOJ retirement data. The requested increase of \$683,000 is necessary to meet our increased retirement obligations as a result of this conversion.</p> | 0 | 0 | 683 |
| Subtotal, Pay and Benefits | 0 | 0 | 9,801 |

Justifications for Technical and Base Adjustments

Drug Enforcement Administration
Salaries and Expenses
(Dollars in Thousands)

| | Direct Pos. | Estimate FTE | Amount |
|---|----------------|-----------------|--------------|
| Domestic Rent and Facilities | | | |
| 1 <u>GSA Rent</u> GSA will continue to charge rental rates that approximate those charged to commercial tenants for equivalent space and related services. The decrease of \$559,000 will allow us to meet our commitment to GSA. The costs associated with GSA rent were derived through the use of an automated system, which uses the latest inventory data, including rate increases to be effective FY 2017 for each building currently occupied by Department of Justice components, as well as the costs of new space to be occupied. | 0 | 0 | -559 |
| 2 <u>Guard Service</u> This includes Department of Homeland Security (DHS) Federal Protective Service charges, Justice Protective Service charges and other security services across the country. The requested increase of \$279,000 is required to meet these commitments. | 0 | 0 | 279 |
| 3 <u>Moves - FY 2016 Non-Recur</u> GSA requires all agencies to pay relocation costs associated with lease expirations. This is the non-recurrence of the move costs associated with new office relocations provided in the FY 2016 President's Budget. | 0 | 0 | -1,852 |
| 4 <u>Moves - FY 2017</u> GSA requires all agencies to pay relocation costs associated with lease expirations. This request provides for the costs associated with new office relocations caused by the expiration of leases in FY 2017. | 0 | 0 | 3,178 |
| Subtotal, Domestic Rent and Facilities | 0 | 0 | 1,046 |
| Other Adjustments | | | |
| 1 <u>Security Investigations</u> DEA is requesting \$141,000 for an expected rate increase for background investigations and reinvestigations in FY 2017. This estimate is based on OPM's most recent rate increase that occurred in FY 2015. | 0 | 0 | 141 |
| Subtotal, Other Adjustments | 0 | 0 | 141 |

Justifications for Technical and Base Adjustments

Drug Enforcement Administration
Salaries and Expenses
(Dollars in Thousands)

| | Direct Pos. | Estimate FTE | Amount |
|---|----------------|-----------------|--------|
| Foreign Expenses | | | |
| <p>1 <u>Capital Security Cost Sharing</u> Per P.L. 108-447 and subsequent acts, all agencies with personnel overseas subject to chief of mission authority "shall participate and provide funding in advance for their share of costs of providing new, safe, secure U.S. diplomatic facilities, without offsets, on the basis of the total overseas presence of each agency as determined by the Secretary of State." Originally authorized for FY 2000-2004, the program has been extended annually by OMB and Congress and has also been expanded beyond new embassy construction to include maintenance and renovation costs of the new facilities." For the purpose of this program, State's personnel totals for DOJ include current and projected staffing. The estimated cost to the Department, as provided by State, for FY 2017 is \$88,574,231. The DEA currently has 806 positions overseas, and funding of \$386,000 is requested for this account.</p> | 0 | 0 | 386 |
| <p>2 <u>Education Allowance</u> For employees stationed abroad, components are obligated to meet the educational expenses incurred by an employee in providing adequate elementary (grades K-8) and secondary (grades 9-12) education for dependent children at post. \$26,000 reflects the decrease in cost to support existing staffing levels.</p> | 0 | 0 | -26 |
| <p>3 <u>Government Leased Quarters (GLQ)</u> GLQ is a program managed by the Department of State (DOS) and provides government employees stationed overseas with housing and utilities. DOS exercises authority for leases and control of the GLQs and negotiates the lease for components. -\$245,000 reflects the change in cost to support existing staffing levels.</p> | 0 | 0 | -245 |
| <p>4 <u>ICASS</u> The Department of State charges agencies for administrative support provided to staff based overseas. Charges are determined by a cost distribution system. The FY 2017 request is based on the projected FY 2016 bill for post invoices and other ICASS costs.</p> | 0 | 0 | 3,713 |

Justifications for Technical and Base Adjustments

Drug Enforcement Administration

Salaries and Expenses

(Dollars in Thousands)

| | Direct Pos. | Estimate FTE | Amount |
|---|----------------|-----------------|---------------|
| <p>5 <u>Living Quarters Allowance (LQA)</u> The living quarter allowance (LQA) is an allowance granted an employee for the annual cost of adequate living quarters for the employee and the employee's family at a foreign post. The rates are designed to cover the average cost of rent, heat, light, fuel, gas, electricity, water, local taxes, and insurance paid by the employee. Employees who receive the GLQ do not receive LQA and vice versa. -\$90,000 reflects the change in cost to support existing staffing levels.</p> | 0 | 0 | -90 |
| <p>6 <u>Post Allowance - Cost of Living Allowance (COLA)</u> Post Allowance - Cost of Living Allowance (COLA): For employees stationed abroad, components are obligated to pay for their COLA. COLA is intended to reimburse certain excess costs and to compensate the employee for serving at a post where the cost of living, excluding the cost of quarters and the cost of education for eligible family members, is substantially higher than in the Washington, D.C. area. \$378,000 reflects the increase in cost to support existing staffing levels.</p> | 0 | 0 | 378 |
| Subtotal, Foreign Expenses | 0 | 0 | 4,116 |
| TOTAL DIRECT TECHNICAL and BASE ADJUSTMENTS | 0 | 0 | 15,104 |

Crosswalk of 2015 Availability
 Drug Enforcement Administration
 Salaries and Expenses
 (Dollars in Thousands)

| Program Activity | FY 2015 Appropriation Enacted | | | Reprogramming/Transfers | | | Carryover Amount | Recoveries/ Refunds Amount | FY 2015 Availability | | |
|------------------------------|-------------------------------|---------------|------------------|-------------------------|---------------|----------------|---------------------|----------------------------------|----------------------|---------------|------------------|
| | Direct Pos. | Actual FTE | Amount | Direct Pos. | Actual FTE | Amount | | | Direct Pos. | Actual FTE | Amount |
| International Enforcement | 1,074 | 934 | 442,640 | 0 | 0 | 42,076 | 3,451 | 879 | 1,074 | 934 | 489,046 |
| Domestic Enforcement | 7,097 | 5,631 | 1,586,735 | 0 | 0 | 340,244 | 36,587 | 7,032 | 7,097 | 5,631 | 1,970,598 |
| State and Local Assistance | 26 | 22 | 3,945 | 0 | 0 | 7,502 | 2,560 | 738 | 26 | 22 | 14,745 |
| Total Direct | 8,197 | 6,587 | 2,033,320 | 0 | 0 | 389,822 | 42,598 | 8,649 | 8,197 | 6,587 | 2,474,389 |
| Balance Rescission | | | 0 | | | 0 | 0 | 0 | | | 0 |
| Total Direct with Rescission | | | 2,033,320 | | | 389,822 | 42,598 | 8,649 | | | 2,474,389 |
| Reimbursable FTE | | 1,119 | | | 0 | | | | | 1,119 | |
| Total Direct and Reimb. FTE | | 7,706 | | | 0 | | | | | 7,706 | |
| Other FTE: | | | | | | | | | | | |
| LEAP FTE | | 854 | | | 0 | | | | | 854 | |
| Overtime | | 48 | | | 0 | | | | | 48 | |
| Grand Total, FTE | | 8,608 | | | 0 | | | | | 8,608 | |

Reprogramming/Transfers: DEA had \$389,822,070 in reprogrammings/transfers in FY 2015:

- 1) \$286,049,950 was transferred from the Department of Justice to DEA's no-year account for Spectrum;
- 2) \$82,395,592 was transferred from expired accounts to DEA's no-year account;
- 3) A net of \$15,037,661 was transferred from HIDTA to DEA;
- 4) \$7,000,000 was transferred from COPS to DEA;
- 5) \$661,133 was transferred from DEA to the Justice Information Systems Technology account;

Carryover: DEA carried forward \$42,598,000 in unobligated balances from FY 2014 to FY 2015 from S&E no-year, S&E multi-year, and VCRP appropriations.

Carryover: DEA carried forward \$42,598,000 in unobligated balances from FY 2014 to FY 2015 from S&E no-year, S&E multi-year, and VCRP appropriations.

Crosswalk of 2016 Availability
Drug Enforcement Administration
Salaries and Expenses
(Dollars in Thousands)

| Program Activity | FY 2016 Enacted | | | Reprogramming/Transfers | | | Carryover | Recoveries/ Refunds | FY 2016 Availability | | |
|------------------------------|-----------------|--------------|------------------|-------------------------|----------|---------------|----------------|------------------------|----------------------|--------------|------------------|
| | Direct Pos. | Est. FTE | Amount | Direct Pos. | Est. FTE | Amount | Amount | Amount | Direct Pos. | Est. FTE | Amount |
| International Enforcement | 1,074 | 934 | 466,364 | 0 | 0 | 35,747 | 3,480 | 24 | 1,074 | 934 | 505,615 |
| Domestic Enforcement | 7,202 | 5,631 | 1,610,179 | 0 | 0 | 34,462 | 312,982 | 13,221 | 7,202 | 5,631 | 1,970,844 |
| State and Local Assistance | 26 | 22 | 3,457 | 0 | 0 | 11,427 | 21,473 | 1,343 | 26 | 22 | 37,700 |
| Total Direct | 8,302 | 6,587 | 2,080,000 | 0 | 0 | 81,636 | 337,935 | 14,588 | 8,302 | 6,587 | 2,514,159 |
| Balance Rescission | | | 0 | | | 0 | 0 | 0 | | | 0 |
| Total Direct with Rescission | | | 2,080,000 | | | 81,636 | 337,935 | 14,588 | | | 2,514,159 |
| Reimbursable FTE | | 1,124 | | | 0 | | | | | 1,124 | |
| Total Direct and Reimb. FTE | | 7,711 | | | 0 | | | | | 7,711 | |
| Other FTE: | | | | | | | | | | | |
| LEAP FTE | | 854 | | | 0 | | | | | 854 | |
| Overtime | | 48 | | | 0 | | | | | 48 | |
| Grand Total, FTE | | 8,613 | | | 0 | | | | | 8,613 | |

Reprogramming/Transfers: DEA anticipates \$81,635,667 in reprogrammings/transfers in FY 2016:

- 1) \$70,000,000 is anticipated to be transferred from expiring accounts to DEA's no-year account;
- 2) \$11,000,000 is anticipated to be transferred from COPS to DEA;

Carryover: DEA carried forward \$337,935,422 in unobligated balances from FY 2015 to FY 2016 from S&E no-year and S&E multi-year appropriations.

Recoveries/Refunds: DEA anticipates recovering and collecting \$14,588,000 in prior year obligations from S&E no-year and S&E multi-year appropriations.

Summary of Reimbursable Resources
 Drug Enforcement Administration
 Salaries and Expenses
 (Dollars in Thousands)

| Collections by Source | 2015 Actual | | | 2016 Estimate | | | 2017 Request | | | Increase/Decrease | | |
|--|--------------|--------------|----------------|---------------|--------------|----------------|--------------|--------------|----------------|-------------------|------------|--------------|
| | Reimb. Pos. | Reimb. FTE | Amount | Reimb. Pos. | Reimb. FTE | Amount | Reimb. Pos. | Reimb. FTE | Amount | Reimb. Pos. | Reimb. FTE | Amount |
| Asset Forfeiture Fund | 0 | 0 | 276,188 | 2 | 0 | 253,670 | 2 | 2 | 253,670 | 0 | 2 | 0 |
| Department of Defense | 6 | 2 | 4,442 | 6 | 5 | 4,000 | 6 | 6 | 4,000 | 0 | 1 | 0 |
| Department of Homeland Security | 0 | 0 | 2,000 | 0 | 0 | 2,000 | 0 | 0 | 2,000 | 0 | 0 | 0 |
| Department of Justice | 0 | 0 | 3,972 | 0 | 0 | 11,600 | 0 | 0 | 22,600 | 0 | 0 | 11,000 |
| Department of State | 29 | 22 | 32,334 | 3 | 3 | 35,000 | 3 | 3 | 26,900 | 0 | 0 | -8,100 |
| Department of Treasury | 0 | 0 | 257 | 0 | 0 | 257 | 0 | 0 | 257 | 0 | 0 | 0 |
| Misc. Government | 2 | 1 | 945 | 1 | 1 | 51,829 | 1 | 1 | 51,829 | 0 | 0 | 0 |
| Misc. Non-Government | 0 | 0 | 300 | 0 | 0 | 100 | 0 | 0 | 100 | 0 | 0 | 0 |
| Office of National Drug Control Policy | 0 | 0 | 61 | 0 | 0 | 61 | 0 | 0 | 61 | 0 | 0 | 0 |
| Organized Crime Drug Enforcement Task Force | 1,243 | 1,093 | 187,633 | 1,115 | 1,115 | 188,959 | 1,115 | 1,115 | 190,597 | 0 | 0 | 1,638 |
| Other Interagency Crime and Drug Enforcement | 1 | 1 | 16,118 | 0 | 0 | 8,115 | 0 | 0 | 8,204 | 0 | 0 | 89 |
| Budgetary Resources | 1,281 | 1,119 | 524,250 | 1,127 | 1,124 | 555,591 | 1,127 | 1,127 | 560,218 | 0 | 3 | 4,627 |

| Obligations by Program Activity | 2015 Actual | | | 2016 Estimate | | | 2017 Request | | | Increase/Decrease | | |
|---------------------------------|--------------|--------------|----------------|---------------|--------------|----------------|--------------|--------------|----------------|-------------------|------------|--------------|
| | Reimb. Pos. | Reimb. FTE | Amount | Reimb. Pos. | Reimb. FTE | Amount | Reimb. Pos. | Reimb. FTE | Amount | Reimb. Pos. | Reimb. FTE | Amount |
| International Enforcement | 34 | 23 | 43,502 | 8 | 7 | 50,007 | 8 | 8 | 41,907 | 0 | 1 | -8,100 |
| Domestic Enforcement | 1,247 | 1,096 | 480,748 | 1,119 | 1,117 | 505,584 | 1,119 | 1,119 | 507,311 | 0 | 2 | 1,727 |
| State and Local Assistance | 0 | 0 | 0 | 0 | 0 | 0 | 0 | 0 | 11,000 | 0 | 0 | 11,000 |
| Budgetary Resources | 1,281 | 1,119 | 524,250 | 1,127 | 1,124 | 555,591 | 1,127 | 1,127 | 560,218 | 0 | 3 | 4,627 |

Detail of Permanent Positions by Category

Drug Enforcement Administration
Salaries and Expenses
(Dollars in Thousands)

| Category | FY 2015 Enacted | | FY 2016 Enacted | | FY 2017 Request | | | | |
|--|-----------------|--------------|-----------------|--------------|-----------------|-------------------|-----------------|-------------------|-------------------|
| | Direct Pos. | Reimb. Pos. | Direct Pos. | Reimb. Pos. | ATBs | Program Increases | Program Offsets | Total Direct Pos. | Total Reimb. Pos. |
| Miscellaneous Operations (001-099) | 54 | 0 | 54 | 0 | 0 | 0 | 0 | 54 | 0 |
| Security Specialists (080) | 73 | 0 | 73 | 0 | 0 | 0 | 0 | 73 | 0 |
| Social Science, Psychology, Welfare (0100-0199) | 5 | 0 | 5 | 0 | 0 | 0 | 0 | 5 | 0 |
| Intelligence Series (132) | 846 | 81 | 859 | 72 | 0 | 4 | 0 | 863 | 72 |
| Personnel Management (0200-0260) | 112 | 0 | 112 | 0 | 0 | 0 | 0 | 112 | 0 |
| Clerical and Office Services (0300-0399) | 1,559 | 259 | 1,583 | 228 | 0 | 12 | 0 | 1,595 | 228 |
| Accounting and Budget (500-599) | 339 | 0 | 339 | 0 | 0 | 0 | 0 | 339 | 0 |
| Engineering and Architecture Group (800-899) | 7 | 0 | 7 | 0 | 0 | 0 | 0 | 7 | 0 |
| Paralegals / Other Law (900-998) | 35 | 0 | 35 | 0 | 0 | 0 | 0 | 35 | 0 |
| Attorneys (905) | 72 | 0 | 72 | 0 | 0 | 0 | 0 | 72 | 0 |
| Information & Arts (1000-1099) | 33 | 0 | 33 | 0 | 0 | 0 | 0 | 33 | 0 |
| Business & Industry (1100-1199) | 72 | 0 | 72 | 0 | 0 | 0 | 0 | 72 | 0 |
| Physical Sciences (1300-1399) | 6 | 0 | 6 | 0 | 0 | 0 | 0 | 6 | 0 |
| Library (1400-1499) | 19 | 0 | 19 | 0 | 0 | 0 | 0 | 19 | 0 |
| Mathematics and Statistics Group | 7 | 0 | 7 | 0 | 0 | 0 | 0 | 7 | 0 |
| Equipment/Facilities Services (1600-1699) | 11 | 0 | 11 | 0 | 0 | 0 | 0 | 11 | 0 |
| Education (1700-1799) | 12 | 0 | 12 | 0 | 0 | 0 | 0 | 12 | 0 |
| Misc. Inspectors/Investigative Assistants (1802) | 356 | 0 | 356 | 0 | 0 | 0 | 0 | 356 | 0 |
| Criminal Investigative Series (1811) | 3,958 | 941 | 4,026 | 827 | 0 | 35 | 0 | 4,061 | 827 |
| Supply Services (2000-2099) | 47 | 0 | 47 | 0 | 0 | 0 | 0 | 47 | 0 |
| Transportation (2100-2199) | 17 | 0 | 17 | 0 | 0 | 0 | 0 | 17 | 0 |
| Information Technology Mgmt (2210-2299) | 211 | 0 | 211 | 0 | 0 | 0 | 0 | 211 | 0 |
| Motor Vehicle Operations (5703) | 1 | 0 | 1 | 0 | 0 | 0 | 0 | 1 | 0 |
| Quality Assurance Series | 6 | 0 | 6 | 0 | 0 | 0 | 0 | 6 | 0 |
| Ungraded | 13 | 0 | 13 | 0 | 0 | 0 | 0 | 13 | 0 |
| Chemist Series | 326 | 0 | 326 | 0 | 0 | 2 | 0 | 328 | 0 |
| Total | 8,197 | 1,281 | 8,302 | 1,127 | 0 | 53 | 0 | 8,355 | 1,127 |
| Headquarters Washington D.C. | 1,921 | 82 | 1,894 | 82 | 0 | 11 | 0 | 1,905 | 82 |
| US Fields | 5,635 | 1,165 | 5,737 | 1,037 | 0 | 42 | 0 | 5,779 | 1,037 |
| Foreign Field | 641 | 34 | 671 | 8 | 0 | 0 | 0 | 671 | 8 |
| Total | 8,197 | 1,281 | 8,302 | 1,127 | 0 | 53 | 0 | 8,355 | 1,127 |

Financial Analysis of Program Changes

Drug Enforcement Administration

Salaries and Expenses

(Dollars in Thousands)

| Grades | International Enforcement | | | | Domestic Enforcement | | | | State and Local Assistance | | | |
|---|---------------------------|----------|-------------------|---------------|----------------------|---------------|-------------------|---------------|----------------------------|----------|-------------------|-----------|
| | Program Increases | | Program Decreases | | Program Increases | | Program Decreases | | Program Increases | | Program Decreases | |
| | Direct Pos. | Amount | Direct Pos. | Amount | Direct Pos. | Amount | Direct Pos. | Amount | Direct Pos. | Amount | Direct Pos. | Amount |
| GS-15 | 0 | 0 | 0 | 0 | 1 | 332 | 0 | 0 | 0 | 0 | 0 | 0 |
| GS-14 | 0 | 0 | 0 | 0 | 3 | 832 | 0 | 0 | 0 | 0 | 0 | 0 |
| GS-13 | 0 | 0 | 0 | 0 | 7 | 732 | 0 | 0 | 0 | 0 | 0 | 0 |
| GS-9 | 0 | 0 | 0 | 0 | 42 | 9,406 | 0 | 0 | 0 | 0 | 0 | 0 |
| Total Positions and Annual Amount | 0 | 0 | 0 | 0 | 53 | 11,302 | 0 | 0 | 0 | 0 | 0 | 0 |
| Lapse (-) | 0 | 0 | 0 | 0 | -26 | -9,703 | 0 | 0 | 0 | 0 | 0 | 0 |
| 11.5 - Other personnel compensation | | 0 | | 0 | | 331 | | 0 | | 0 | | 0 |
| Total FTEs and Personnel Compensation | 0 | 0 | 0 | 0 | 27 | 1,930 | 0 | 0 | 0 | 0 | 0 | 0 |
| 12.1 - Civilian personnel benefits | | 0 | | 0 | | 1,064 | | 0 | | 0 | | 0 |
| 21.0 - Travel and transportation of persons | | 0 | | -266 | | 314 | | -213 | | 0 | | 0 |
| 22.0 - Transportation of things | | 0 | | -74 | | 180 | | -114 | | 0 | | 0 |
| 23.2 - Rental payments to others | | 0 | | -533 | | 27 | | -73 | | 0 | | 0 |
| 23.3 - Communications, utilities, and miscellaneous charges | | 0 | | -162 | | 1,064 | | -676 | | 0 | | 0 |
| 24.0 - Printing and reproduction | | 0 | | 0 | | 4 | | -3 | | 0 | | 0 |
| 25.1 - Advisory and assistance services | | 0 | | -331 | | 2,987 | | -1,354 | | 0 | | -2 |
| 25.2 - Other services from non-federal sources | | 0 | | -1,719 | | 4,269 | | -1,408 | | 0 | | -1 |
| 25.3 - Other goods and services from federal sources | | 0 | | -967 | | 159 | | -732 | | 0 | | -1 |
| 25.4 - Operation and maintenance of facilities | | 0 | | -10 | | 0 | | -443 | | 0 | | 0 |
| 25.6 - Medical care | | 0 | | -8 | | 103 | | -23 | | 0 | | 0 |
| 25.7 - Operation and maintenance of equipment | | 0 | | -133 | | 0 | | -1,214 | | 0 | | 0 |
| 25.8 - Subsistence and support of persons | | 0 | | 0 | | 0 | | -1 | | 0 | | 0 |
| 26.0 - Supplies and materials | | 0 | | -133 | | 325 | | -433 | | 0 | | -1 |
| 31.0 - Equipment | | 0 | | -177 | | 7,468 | | -716 | | 0 | | 0 |
| 32.0 - Land and structures | | 0 | | -7 | | 150 | | -232 | | 0 | | 0 |
| 42.0 - Insurance claims and indemnities | | 0 | | 0 | | 0 | | -12 | | 0 | | 0 |
| Total Program Change Requests | 0 | 0 | 0 | -4,520 | 27 | 20,044 | 0 | -7,647 | 0 | 0 | 0 | -5 |

| Grades | Total Program Changes | |
|---|-----------------------|---------------|
| | Direct Pos. | Amount |
| GS-15 | 1 | 332 |
| GS-14 | 3 | 832 |
| GS-13 | 7 | 732 |
| GS-9 | 42 | 9,406 |
| Total Positions and Annual Amount | 53 | 11,302 |
| Lapse (-) | -26 | -9,703 |
| 11.5 - Other personnel compensation | | 331 |
| Total FTEs and Personnel Compensation | 27 | 1,930 |
| 12.1 - Civilian personnel benefits | | 1,064 |
| 21.0 - Travel and transportation of persons | | -165 |
| 22.0 - Transportation of things | | -8 |
| 23.2 - Rental payments to others | | -579 |
| 23.3 - Communications, utilities, and miscellaneous charges | | 226 |
| 24.0 - Printing and reproduction | | 1 |
| 25.1 - Advisory and assistance services | | 1,300 |
| 25.2 - Other services from non-federal sources | | 1,141 |
| 25.3 - Other goods and services from federal sources | | -1,541 |
| 25.4 - Operation and maintenance of facilities | | -453 |
| 25.6 - Medical care | | 72 |
| 25.7 - Operation and maintenance of equipment | | -1,347 |
| 25.8 - Subsistence and support of persons | | -1 |
| 26.0 - Supplies and materials | | -242 |
| 31.0 - Equipment | | 6,575 |
| 32.0 - Land and structures | | -89 |
| 42.0 - Insurance claims and indemnities | | -12 |
| Total Program Change Requests | 27 | 7,872 |

Summary of Requirements by Object Class

Drug Enforcement Administration

Salaries and Expenses

(Dollars in Thousands)

| Object Class | FY 2015 Actual | | FY 2016 Enacted | | FY 2017 Request | | Increase/Decrease | |
|---|----------------|------------------|-----------------|------------------|-----------------|------------------|-------------------|----------------|
| | Act. FTE | Amount | Direct FTE | Amount | Direct FTE | Amount | Direct FTE | Amount |
| 11.1 - Full-time permanent | 6,587 | 633,420 | 6,587 | 611,185 | 6,614 | 613,518 | 27 | 2,333 |
| 11.3 - Other than full-time permanent | 0 | 5,321 | 0 | 5,625 | 0 | 5,671 | 0 | 46 |
| 11.5 - Other personnel compensation | 902 | 105,524 | 902 | 111,513 | 907 | 112,019 | 5 | 506 |
| <i>Overtime</i> | 48 | 0 | 48 | 0 | 48 | 0 | 0 | 0 |
| <i>Other Compensation</i> | 854 | 0 | 854 | 0 | 859 | 0 | 5 | 0 |
| 11.8 - Special personal services payments | 0 | 42 | 0 | 45 | 0 | 45 | 0 | 0 |
| Total | 7,489 | 744,307 | 7,489 | 728,368 | 7,521 | 731,253 | 32 | 2,885 |
| Other Object Classes | | | | | | | | |
| 12.1 - Civilian personnel benefits | | 355,313 | | 373,451 | | 379,533 | 0 | 6,082 |
| 21.0 - Travel and transportation of persons | | 32,863 | | 34,632 | | 33,556 | 0 | -1,076 |
| 22.0 - Transportation of things | | 12,431 | | 13,288 | | 13,179 | 0 | -109 |
| 23.1 - Rental payments to GSA | | 204,544 | | 203,691 | | 203,230 | 0 | -461 |
| 23.2 - Rental payments to others | | 38,429 | | 42,916 | | 42,075 | 0 | -841 |
| 23.3 - Communications, utilities, and miscellaneous charges | | 57,080 | | 59,654 | | 59,209 | 0 | -445 |
| 24.0 - Printing and reproduction | | 285 | | 254 | | 241 | 0 | -13 |
| 25.1 - Advisory and assistance services | | 119,995 | | 142,208 | | 147,936 | 0 | 5,728 |
| 25.2 - Other services from non-federal sources | | 221,525 | | 235,188 | | 210,196 | 0 | -24,992 |
| 25.3 - Other goods and services from federal sources | | 96,555 | | 115,114 | | 118,081 | 0 | 2,967 |
| 25.4 - Operation and maintenance of facilities | | 30,462 | | 32,037 | | 31,417 | 0 | -620 |
| 25.6 - Medical care | | 2,055 | | 2,178 | | 2,250 | 0 | 72 |
| 25.7 - Operation and maintenance of equipment | | 88,654 | | 94,950 | | 93,500 | 0 | -1,450 |
| 25.8 - Subsistence and support of persons | | 218 | | 123 | | 91 | 0 | -32 |
| 26.0 - Supplies and materials | | 43,854 | | 45,011 | | 42,690 | 0 | -2,321 |
| 31.0 - Equipment | | 68,710 | | 82,158 | | 82,736 | 0 | 578 |
| 32.0 - Land and structures | | 12,931 | | 15,499 | | 16,727 | 0 | 1,228 |
| 42.0 - Insurance claims and indemnities | | 801 | | 844 | | 832 | 0 | -12 |
| Total Obligations | | 2,131,012 | | 2,221,564 | | 2,208,732 | 0 | -12,832 |
| Net of: | | | | | | | | |
| Unobligated Balance, Start-of-Year | | -42,598 | | -337,935 | | -292,595 | 0 | 45,340 |
| Transfers/Reprogramming | | -389,822 | | -81,636 | | -69,948 | 0 | 11,688 |
| Recoveries/Refunds | | -8,649 | | -14,588 | | 0 | 0 | 14,588 |
| Balance Rescission | | 0 | | 0 | | 6,192 | 0 | 6,192 |
| Unobligated End-of-Year, Available | | 337,935 | | 292,595 | | 250,595 | 0 | -42,000 |
| Unobligated End-of-Year, Expiring | | 5,442 | | 0 | | 0 | 0 | 0 |
| Total Direct Requirements | | 2,033,320 | | 2,080,000 | | 2,102,976 | | 22,976 |
| Reimbursable FTE | | | | | | | | |
| Full-Time Permanent | 1,119 | | 1,124 | | 1,127 | | 3 | 0 |

Drug Enforcement Administration

Status of Congressionally Requested Studies, Reports, and Evaluations

1. The Committee is extremely concerned about the growing menace of prescription drug abuse, and the resurgent heroin abuse and overdoses that appear connected to vigorous enforcement of laws against prescription drug diversion. Data collected by the National Center for Health Statistics show that the growth in opioid overdose deaths has risen steadily, nearly quadrupling from 1999 to 2013. While most of that growth was from abuse of painkillers, in recent years the death rate from heroin overdoses has grown even faster, rising 172 percent from 2010 to 2013 alone. The Committee recommendation supports a vigorous investigative program for DEA to deal with these rising threats, and directs DEA to report to the Committee no later than 60 days after enactment of this Act on the actual or estimated number of heroin and prescription drug diversion investigations for fiscal years 2013 through 2016, the amounts and street value of drugs associated with such investigations, and prosecutions resulting from investigations.

2. The Committee directs the DEA to review all relevant DEA rules governing research on the medical efficacy of marijuana and determine ways to facilitate further research through streamlining the DEA approval process. The Committee further directs DEA to work in collaboration with NIH/NIDA and FDA to facilitate such research efforts. The Committee requests DEA to report back to the Committee within 120 days with a plan by which the agency can facilitate additional research.

3. DEA shall report to the Committee within 90 days after the enactment of this act on its drug diversion investigations involving VHA facilities and to report on the status of investigations on a quarterly basis thereafter. The initial report shall include: the number of ongoing DEA drug diversion investigations into VHA facilities, the number of DEA drug diversion investigations into VHA facilities concluded in the prior year, an analysis of trends in DEA and VHA drug diversion investigations over the past 10 years, the number of investigations that resulted in indictments, a review of factors that may be leading to drug diversion including VHA prescription drug prescribing practices, and recommendations or best practices to prevent drug diversion from VHA facilities.

4. The Committee applauds the Drug Enforcement Administration's work with Afghan vetted units. To protect U.S. interests in counternarcotics investigations and ensure they result in convictions and sentencing in Afghanistan, the Committee strongly encourages the DEA to continue supporting vetted units in Afghanistan to the greatest extent practicable. The Committee directs the DEA to submit a report providing an assessment of the effectiveness of its Sensitive Investigative Units, which shall include an analysis of the costs and benefits of continued expansion in Central America and West Africa, not later than 90 days after enactment of this act.

Senior Executive Service Report for FY 2015
 Drug Enforcement Administration
 Salaries and Expenses
 (\$000)

| SES Pay Band | <u>Staffing (as of 9/30/15)</u> | | <u>Awards (FY 2014)</u> | | <u>SES Removals Due to:</u> | | |
|------------------------------|---------------------------------|-------------------|-------------------------|------------------|--|--------------------|---------------|
| | Established Positions | Onboard Personnel | Number of Awards | Amount of Awards | Less Than Fully Successful Performance | Reduction in Force | Other Reasons |
| \$121,956 - \$183,300 | 80 | 64 | 29 | \$371 | 0 | 0 | 0 |

Note: OPM no longer sets basic rates of pay for members of the SES. Basic SES pay for an agency with a certified performance management system, which DOJ has, is between \$121,956 and \$183,300.